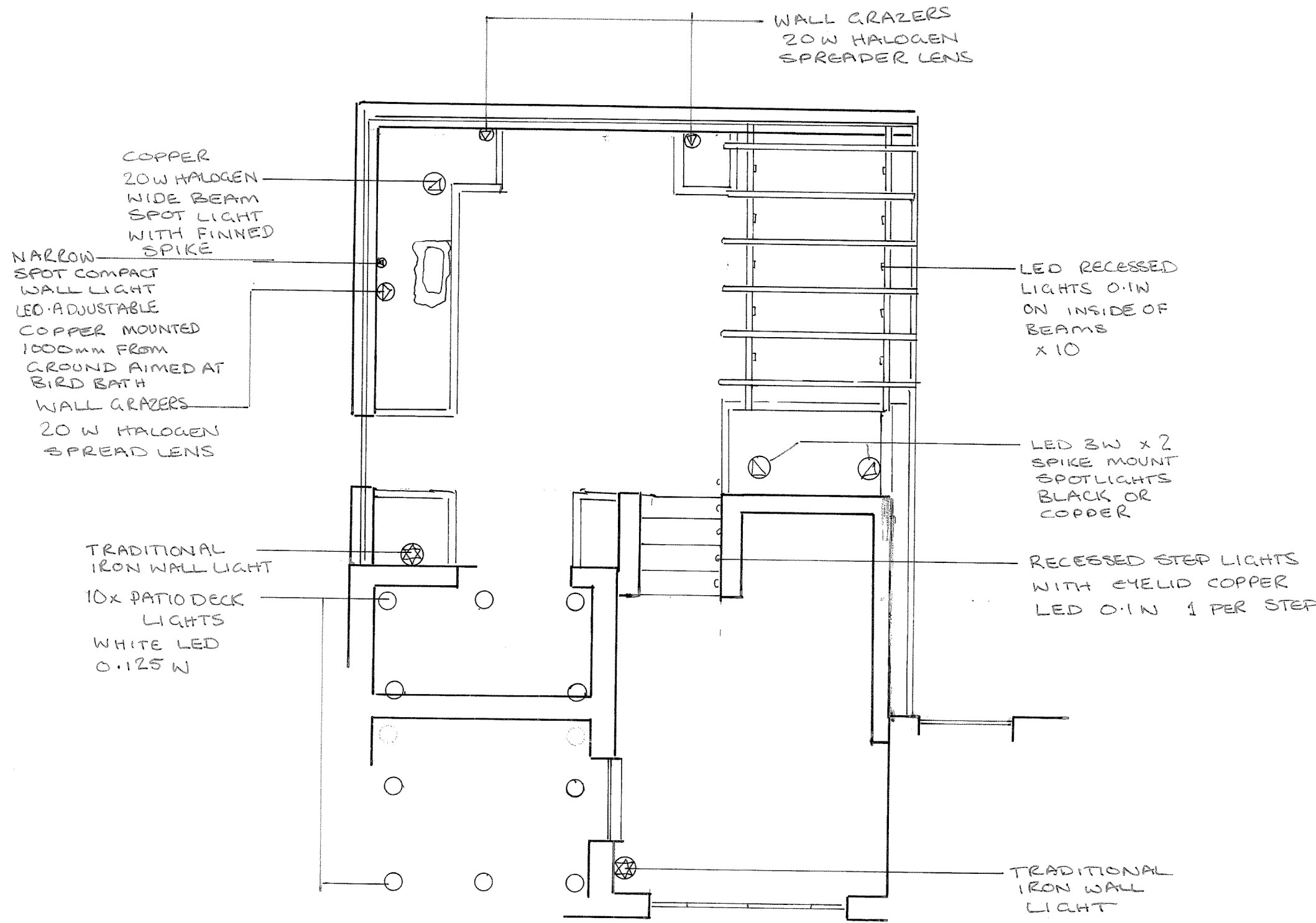


LIGHTING PLAN



Circuit One:

- 2 x Traditional iron wall lights e.g. 'Old England' NE1/s www.lightinnovation.co.uk
- 1. On store wall beside garden gate at 1100mm
- 2. On house wall beside Kitchen door at 1500mm

Circuit Two:

- 4-5 x Recessed step lights with eyelid in copper LED with 1-watt lamps. Into right hand side wall, 150mm above each step
- 2 x Spot lights with spike mounts in copper LED with 3 watt lamps. Placed in raised bed to light up the planting and end of the pergola

Circuit Three:

- 3 x Wall Grazers spots in copper Halogen with 20-watt lamps and spreader lenses Placed just above soil level and aimed to graze the wall and bring out the texture of the brick whilst picking out the climbing plants on the trellis.
- 1 x wide beam Halogen spot in copper with finned spike and 20 watt lamp. Placed to light up tree.
- 1 x narrow compact wall mounted adjustable spot with glare shield, LED with 3 watt lamp. Mounted 1000mm above ground and positioned to shine on the birdbath.
- 10 x Recessed lights LED with 1 watt lamps. Positioned on the inside of the pergola long beams between the cross beams to light up the foliage and flowers on the pergola ceiling.

Circuit Four

- 10 x Recessed patio deck lights into deck on the roof terrace. White LED with 0.125 watt lamps

JaneStewartGardens



Garden Design

By

Jane Stewart

BSc (Hons) Botany PGDIP. Hort.
MSc. ACGD

01725 517 399

Jane.stewart@tiscali.co.uk

CLIENT:

TITLE:

Copy right—Jane M Stewart

SCALE:

ALL DIMENSIONS SHOULD BE CHECKED ONSITE

DATE:

DRAWN BY: